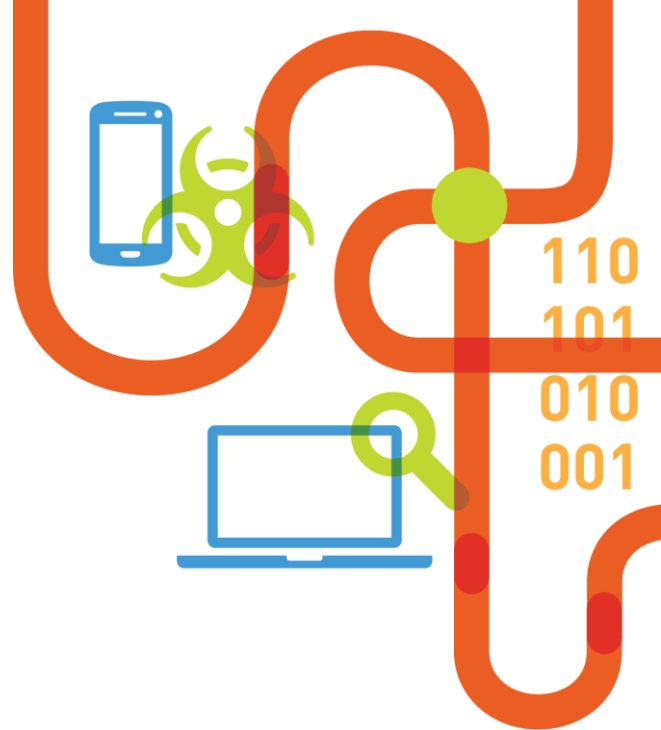


RAPID7

NEXPOSE ENTERPRISE METASPLOIT PRO

Effective Vulnerability Management and validation

March 2015



nexpose[®]

metasploit[®]

KEY SECURITY CHALLENGES

Common Challenges Organizations Experience

Key Security Challenges



Visibility gaps of security risks to business



Information overload inhibits decision making



Difficulty in communicating remediation



Security programs are too tactical

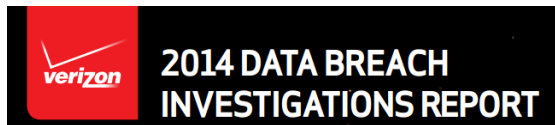


Hard to show security adds value



Costly compliance requirements

Patch ALL THE THINGS!



Patch ALL THE THINGS

Exploiting browser, OS, and other third-party software (e.g., Flash and Java) vulnerabilities to infect end-user systems is a common initial step for attackers. Keeping everything up to date will make that step a lot harder to take.

nexpose[®]

metasploit[®]

RAPID7 SOLUTIONS

Nexpose Vulnerability Management

Know Your Network



Manage Risk Effectively



Simplify Your Compliance





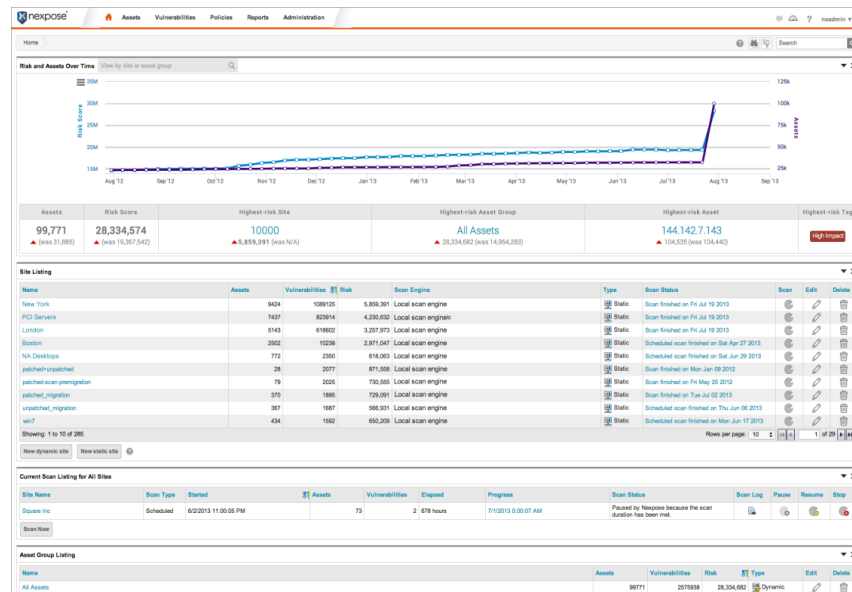
KNOW YOUR NETWORK

Before you can manage risk you need to find it

Efficient Security Assessment

Single Security Scan

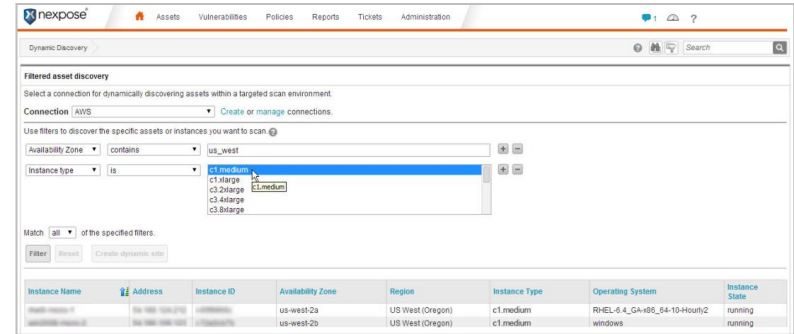
- Simple setup & configuration
- Unified scanning
 - OS, Applications, Services, Web, Database, and configurations
- Consolidated reporting



Across Modern Networks

- Physical, virtual, and cloud
- Real-time discovery
- Expert scanning system

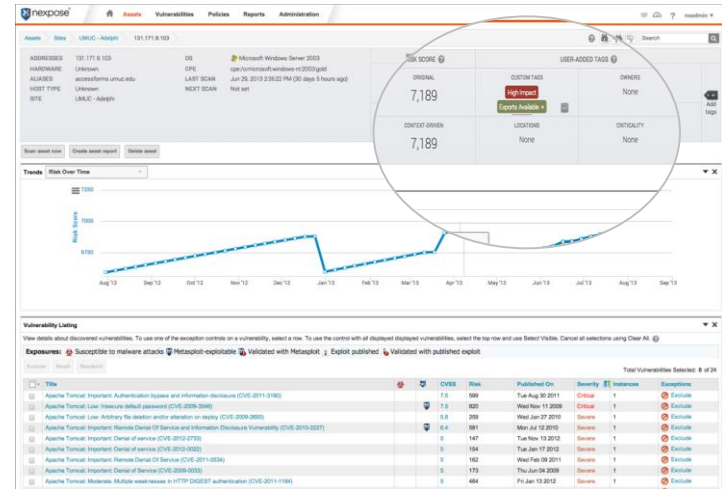
Comprehensive Visibility



Understand Business Context

- Automatic classification
- Identify important systems
- Assign remediation owners

RealContext™





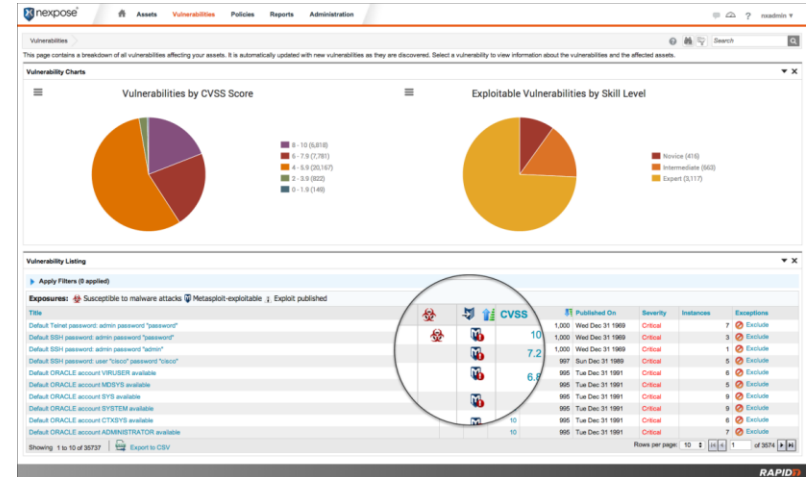
MANAGE RISK EFFECTIVELY

Not all risk is created equal and shouldn't be treated the same

Vulnerability Validation

- Safely exploit vulnerabilities
- Focus on proven risks
- Closed-loop remediation

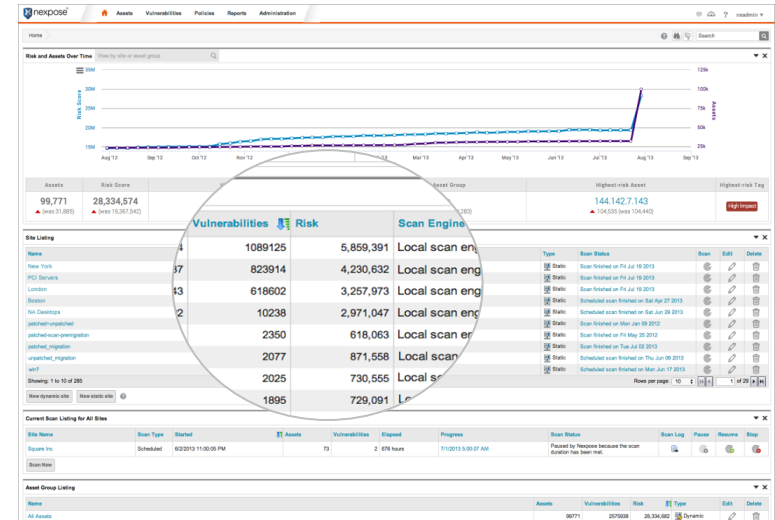
Validate with Metasploit PRO



Advanced Vulnerability Prioritization

- Threat-driven risk algorithm
- Granular risk scoring
- Use RealContext™ to increase risk score

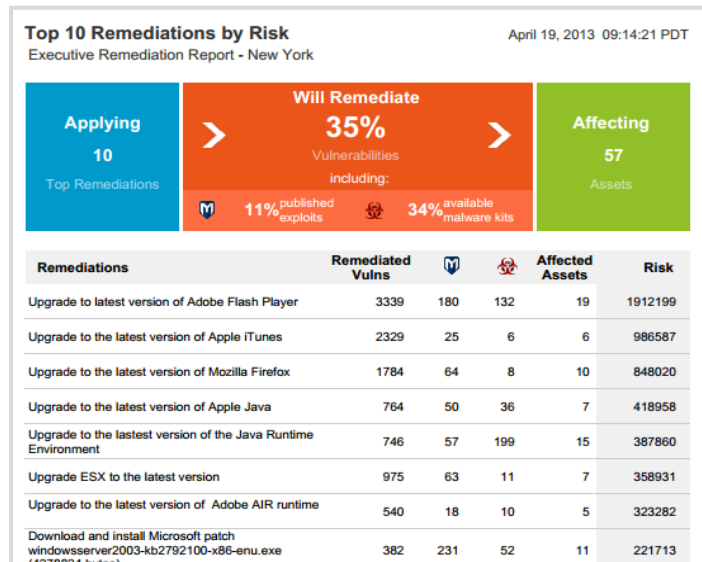
RealRisk™



Risk Remediation Planning

- Actionable impactful decisions
- Short targeted reports
- Step-by-steps instructions

Top Remediations





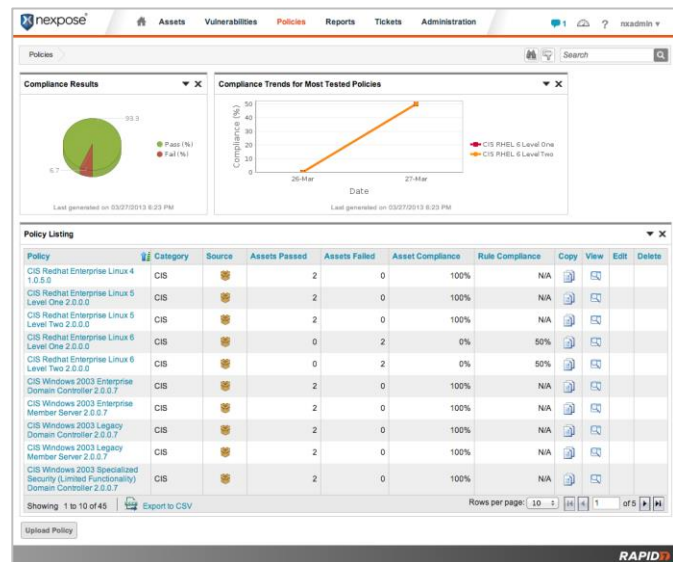
SIMPLIFY YOUR COMPLIANCE

Don't spend too much time showing and improving compliance

Unified Security & Compliance

- Single assessment scan
- Customizable policies
- Consolidated reporting

Policy Manager

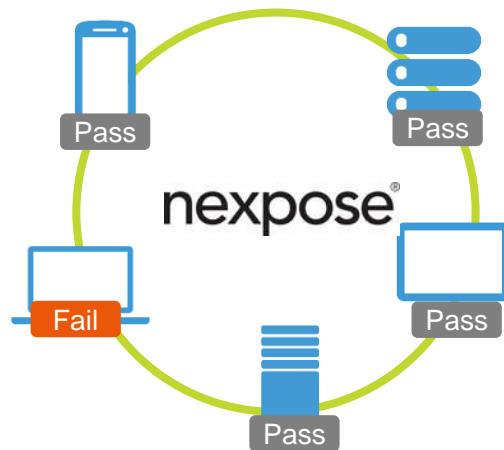


Compliance Auditing & Reporting

- Customizable Audit Reports
- PCI Compliance Reports

Policy Scanning & Reporting

PCI HIPAA SOX NERC 🔒 COMPLAINT



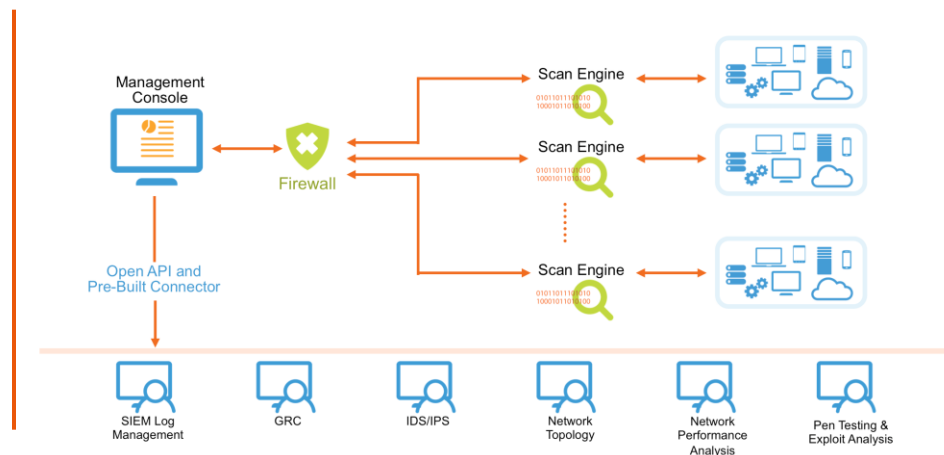
nexpose[®]

ARCHITECTURE

Flexible and Scalable Architecture

- Multiple deployment options
- Agentless scanning
- Scale with scan engines
- OpenAPI™ for integrations

Enterprise Architecture



metasploit[®]

INCREASE YOUR
PRODUCTIVITY
ON PENETRATION TESTS

We're Not Always Covering the Basics

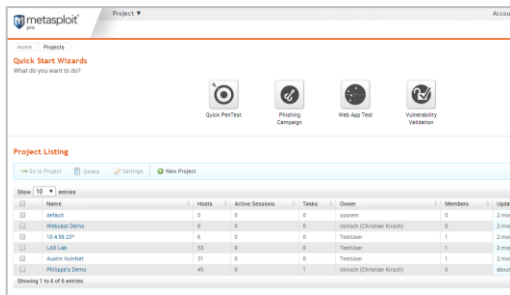


2013 had
62% more data breaches
than 2012

Source: Symantec Internet Security Threat Report

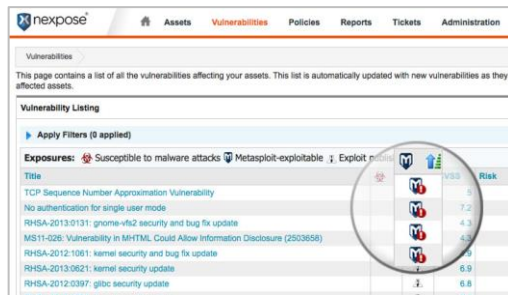
Test Your Defenses More Efficiently

Penetration Testing



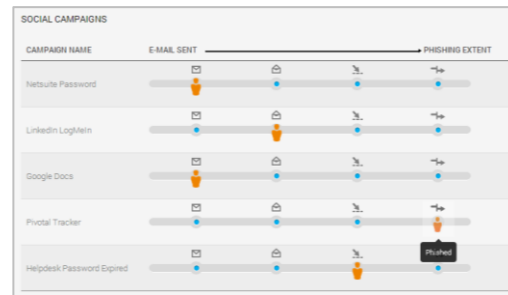
- Simulate a real-world attack to test your defenses
- Conduct penetration tests 45% faster

Vulnerability Validation



- Validate vulnerabilities to demonstrate risk
- Close-loop integration with Nexpose for remediation

Phishing Simulation



- Validate vulnerabilities to demonstrate risk
- Close-loop integration with Nexpose for remediation

Where Penetration Testers Should Spend their Time

- Simulating an attacker by identifying and exploiting the most likely attack vectors
- Moving laterally across the network
- Compromising the security assessment “goal”
- Testing the effectiveness of people, processes and defensive technologies
- Analyzing gaps in the security program
- Providing insights on how to mitigate risk



Where Penetration Testers Actually Spend their Time

- Scripting their own solution to automate your standard workflows
- Tracking assessment data and correlating different sources
- Reporting on findings with manual or home-grown solution
- Developing custom payloads and obfuscators to evade anti-virus solutions



The Challenge: Productivity of Open Source Solutions

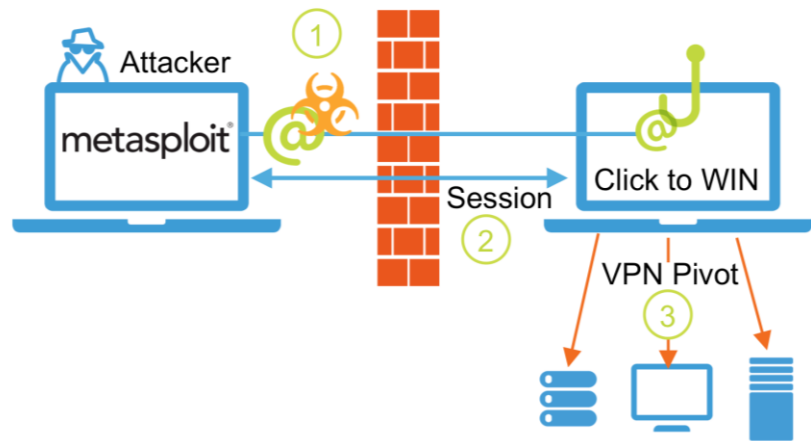
Open source security tools
are great for innovation but
not for productivity.

Manage Data and Automate Workflows

- Data management for large projects
 - Metasploit Pro supports 1,000s of hosts
 - Annotate, tag, sort, group and find
- You decide, Metasploit automates
 - **Wizards:** Standard workflows, e.g. quick pentests, web app tests, phishing simulation
 - **Task Chains:** Custom workflows, e.g. your preferred “opening moves” on an engagement
 - **MetaModules:** Discrete tasks, e.g. testing a credential across all services on a network

Evade Anti-Virus, Bypass Firewalls, Take Control

- Evade anti-virus with Dynamic Payloads
 - Evades all top 10 AV solutions by default
- Get past IPS with stage encoding and manipulating the transport layer
- Get around firewalls using VPN pivoting
 - Full local access to local networks through compromised hosts
- Take control of compromised machines
 - Choose from over 200 post-exploitation modules to be run when session is created



VPN Pivoting gives you full local network access through a compromised machine

Automatically Generate Reports of Key Findings

- Reports take up to 30% of an assessment
 - Automatically record actions and findings
 - Generate reports
 - Technical, management and compliance report
- Help with regulatory compliance
 - Metasploit Pro helps comply with PCI DSS, HIPAA, FISMA and SOX



PRIORITIZE AND DEMONSTRATE RISK WITH CLOSED-LOOP VULNERABILITY VALIDATION

Security Professionals Often Face These Questions



IT Operations asks

- Is the vulnerability “real” and not a false positive?
 - What’s the impact of the vulnerability?
 - What vulnerabilities should be patched first, given our limited resources?
-



Auditors ask

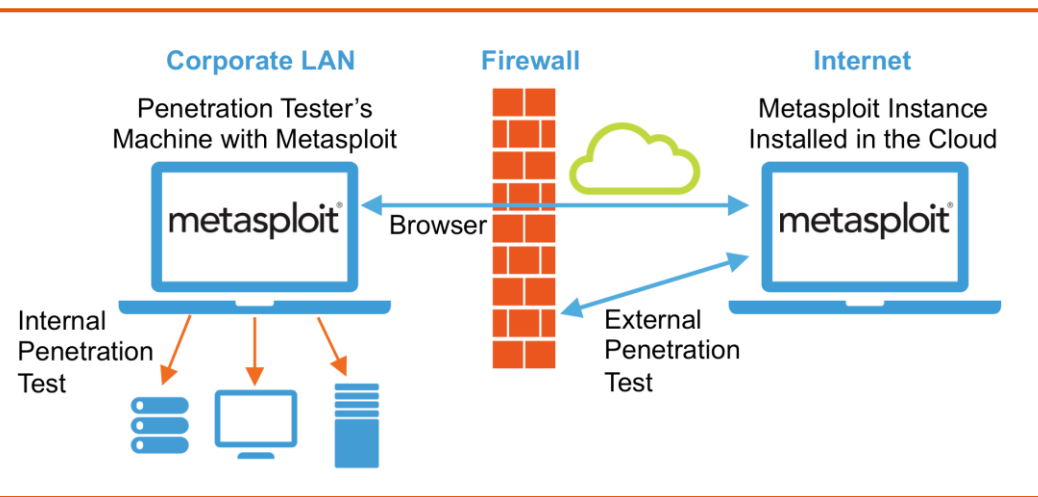
- Show me that you successfully remediated the vulnerability?
 - Can you prove that your compensating control actually mitigates the risk?
-

Prioritize Vulnerabilities and Demonstrate Risk

- Metasploit validates vulnerabilities to demonstrate risk and prioritize remediation
 - Eliminate false positives and vulnerabilities with compensating controls
- Validated vulnerabilities are pushed back to Nexpose for closed-loop reporting
 - Report on validated vulnerabilities
- Tip: Agree on SLA with IT operations to remediate validated vulnerabilities

Metasploit Pro's Deployment Options

- Web-based user interface
- API integrations
- 10+ installations per named-user
- Enterprise-level support



Metasploit Editions - Overview

Metasploit Community

Free Entry-level Edition

Metasploit Express

Basic Penetration Tests

Metasploit Pro

Full Penetration Tests,
Vulnerability Validation,

Metasploit Framework

Free Open Source Development Platform

nexpose[®]

metasploit[®]

QUESTIONS?

VLAD.GLADIN@QEAST.RO